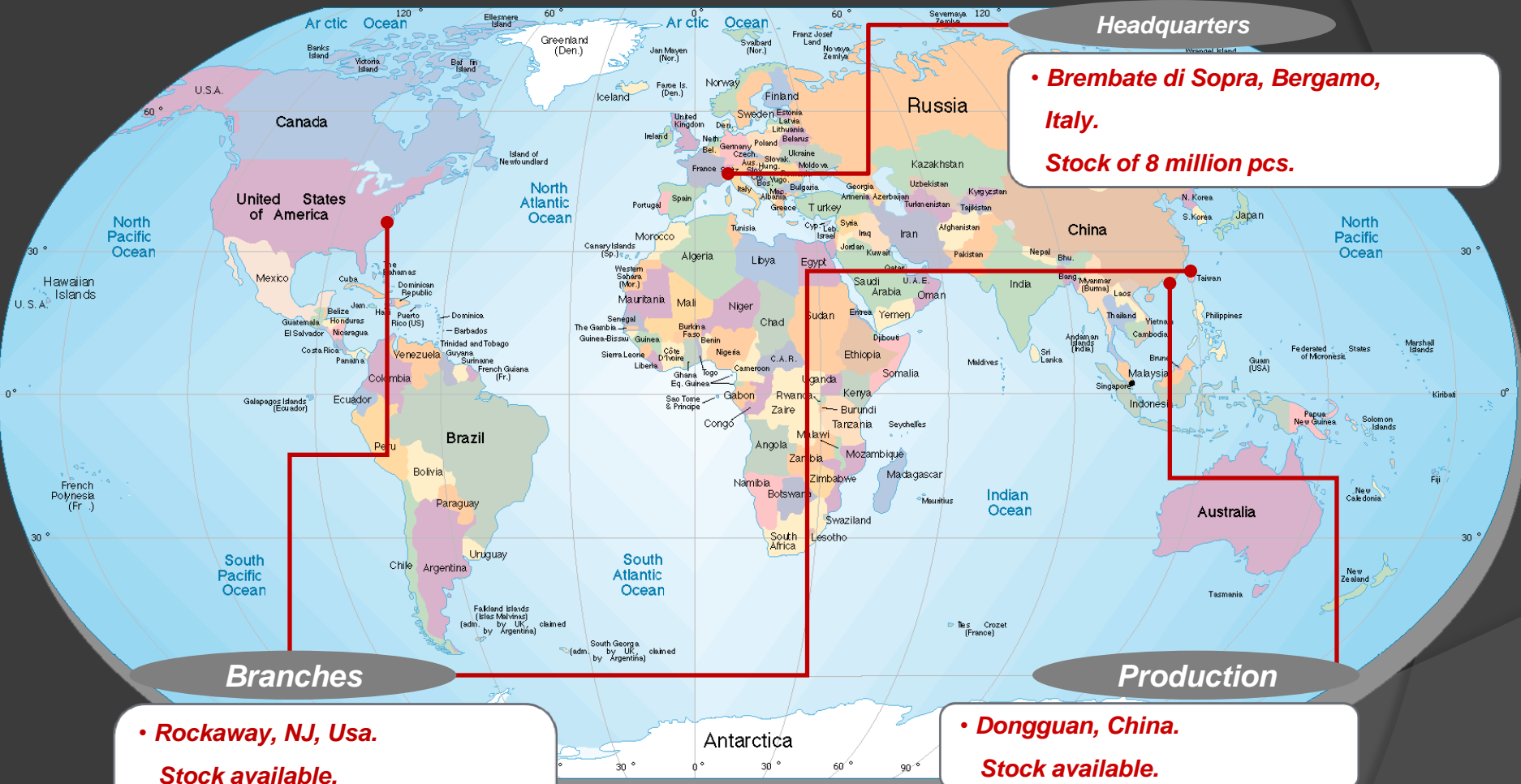


... since 2003 ...



Headquarters

- **Brembate di Sopra, Bergamo, Italy.**
- Stock of 8 million pcs.**

Branches

- **Rockaway, NJ, Usa.**
Stock available.
- **Taipei, Taiwan.**
Stock available.

Production

- **Dongguan, China.**
Stock available.

HTP products are sold to first class customers



... since 2003 ...

... in over 70 countries ...

... in all continents ...

Benefits for the customers

Very high quality

Complete and very wide range of products

Product range continuously increasing through R&D focused on new key products

The most competitive prices in the market

Just in time delivery from our stock in Italy, USA, China and Taiwan

Innovative, unique and cost effective technical solutions and features of our products

Brand labelling and development of special products

Ability to find and implement most suitable technical and commercial solutions to any customers' requirements

UL/CSA APPROVED

Issued to:

HTP SRL
VIA Lesina, 45
24030-BREMBATE DI SOPRA-BG
ITALY



CONNECTORS FOR USE IN DATA, SIGNAL, CONTROL AND POWER

This is to certify that representative samples of
Series Housing G1/G2/P1/P2/M1/M2/BM and Header BG & BP.

Have been investigated by Underwriters Laboratories in accordance with the Standard(s)
indicated on this Certificate.

Standard(s) for Safety:

UL 1977 - Component Connectors for Use in Data, Signal, Control and Power Applications
CAN/CSA C22.2 No. 182.3-M1987 – Special Use
Attachment Plugs, Receptacles and Connectors

Additional Information:

See UL On-line Certification Directory at WWW.UL.COM/database for additional information

ATEX 94/9/CE APPROVED



General information

- **Report n°:** 13/2062-AET 1162
- **Date of report:** 30.10.2013
- **Prepared by:** Ing. Giuseppe Terzaghi, CEC – consorzio europeo certificazione S.C.A.R.L.
- **Main reference norm:** ATEX 94/9/CE
- **Equipment under test:** connectors for electric valves
- **Manufacturer:** HTP S.r.l.
- **Applicant's name and address:** HTP S.r.l. - Via Lesina, 45
24030 – Brembate di Sopra (BG) - Italy
- **Type:** DIN 43650 – A (G1+G2), DIN 43650 – B (M1+M2),
DIN 43650 – C (P1+P2), M8 field attachable 3/4 poles
M12 field attachable 3/4/5/8/12 poles

Certification UNI EN ISO 9001:2008

CERTIFICATO
Nr 50 100 10684 - Rev. 01

Si attesta che / This is to certify that

IL SISTEMA QUALITÀ DI
THE QUALITY SYSTEM OF

HTP
HIGH TECH PRODUCTS

H.T.P. HIGH TECH PRODUCTS S.r.l.

SEDE LEGALE: / REGISTERED OFFICE:
**VIA GIACOMO QUARENGHI 11
I-24122 BERGAMO (BG)**

SEDE OPERATIVA: / OPERATIONAL SITE:
**VIA LESINA 45
I-24030 BREMBATE DI SOPRA (BG)**

E CONFORME AI REQUISITI DELLA NORMA
HAS BEEN FOUND TO COMPLY WITH THE REQUIREMENTS OF

UNI EN ISO 9001:2008

QUESTO CERTIFICATO È VALIDO PER IL SEGUENTE CAMPO DI APPLICAZIONE
THIS CERTIFICATE IS VALID FOR THE FOLLOWING SCOPE

**Commercializzazione di connettori, sensori e prolunghe per automazione
(IAF 29, 19)**

**Trade of industrial connectors, sensor switches and extensions for
automation (IAF 29, 19)**

ACCREDIA
ENTE ITALIANO DI ACCREDITAMENTO

Per l'Organismo di Certificazione
For the Certification Body
TÜV Italia S.r.l.

Validità / Validity
Dal / From: **2014-10-21**
Al / To: **2017-10-20**

Signature of EA (IAF and ILAC Mutual Recognition Agreement)
Claus Spallinger
Direttore Systems & Compliance

Data emissione / Printing Date
2014-11-03

PRIMA CERTIFICAZIONE / FIRST CERTIFICATION: 2011-10-21

"LA VALIDITÀ DEL PRESENTE CERTIFICATO È SUBORDINATA A SORVEGLIANZA PERIODICA A 12 MESI E AL RIESAME COMPLETO DEL SISTEMA DI GESTIONE AZIENDALE CON PERIODICITÀ TRIENNALE"

"THE VALIDITY OF THE PRESENT CERTIFICATE DEPENDS ON THE ANNUAL SURVEILLANCE EVERY 12 MONTHS AND ON THE COMPLETE REVIEW OF COMPANY'S MANAGEMENT SYSTEM AFTER THREE-YEARS"

TÜV Italia S.r.l. • Gruppo TÜV SÜD • Via Carducci 125, Pal. 23 • 20089 Sesto San Giovanni (MI) • Italia • www.tuv.it TÜV®



CERTIFICATO Nr 50 100 10684

M8/M9/M12/M23 CIRCULAR CONNECTORS

- *M8/M9/M12/M23 circular connectors are normally used with sensors and can also be used to implement a flexible I/O or field bus connection on the circuit board*
- *With the modular design concept, connectors are available in different versions, e.g.: 2-, 3-, 4-, 5-, 8-, 12- pin for M12 connectors, as well as 3- and 4-pin for M8 connectors*
- *M12 connectors are currently recommended as field bus connectors for almost all field bus specifications, and are also available with different coding (A, B, D)*
- *M8/M12/M23 circular connectors are available as field attachable, moulded assembly and panel mounting*

M8/M9/M12/M23 CIRCULAR CONNECTORS

M8 field attachable connectors

- 3 and 4 poles
- Male and female
- Solder contacts and screw contacts

To Solder



To Screw



**Also available with stainless steel nut*

M8/M9/M12/M23 CIRCULAR CONNECTORS

M8 panel mounting connectors

- 3 and 4 poles
- Male and female
- Front and back mounting
- With soldered contacts, PCB contacts and with wire already soldered



with M12 thread



Adapter Male/Female

**Also available with stainless steel nut*

M8/M9/M12/M23 CIRCULAR CONNECTORS

M8 connectors with moulded cable

- 3 and 4 poles and **8 POLES**
- Male and female
- Straight and right angled
- Single and double ended
- PVC, PUR cable, shielded and fully shielded
- Any length available



Straight



90°



**Also available with stainless steel nut*

M8/M9/M12/M23 CIRCULAR CONNECTORS

M8 connectors with PNP Led and moulded cable

- 3 and 4 poles
- Male and female
- Straight and right angled
- Single and double ended
- PVC and PUR cable
- Any length available
- 2 LED's for PNP and NPN switch indication

Straight



90°



**Also available with stainless steel nut*

M8/M9/M12/M23 CIRCULAR CONNECTORS

M8 snap connectors with PNP or PUR moulded cable

- 2, 3 and 4 poles
- Female
- Straight and right angled
- PVC and PUR cable
- Any length available

Straight



90°



M8/M9/M12/M23 CIRCULAR CONNECTORS

Extensions M8 with cable

- 3, 4 poles AND **8 POLES**
- Male and female
- PVC, PUR, moulded and shielded cable
- Operating voltage: 60V AC/DC
- Operating current: 4A
- Maximum conductor size: 0,25 mm²
- Protection class (IEC 60529): IP 69K
- Temperature range: -25°C to +70°C



Straight



90°



**Also available with stainless steel nut*

M8/M9/M12/M23 CIRCULAR CONNECTORS

M9 with cable

- *5 poles versions*
- *Male and female*
- *PUR shielded cable*
- *totally shielded connectors with PUR shielded cable*
- *Straight*

M8/M9/M12/M23 CIRCULAR CONNECTORS

M9 totally shielded connectors with PVC or PUR shielded cable

- 5 poles
- Male and female
- PUR shielded cable and totally shielded connectors with PUR shielded cable
- Operating voltage: 30V AC/DC
- Operating current: 3A
- Maximum conductor size: 0,25 mm²
- Protection class (IEC 60529): IP 69K
- Temperature range: -25°C to +70°C

Female



Male



M8/M9/M12/M23 CIRCULAR CONNECTORS

M12 field attachable circular connectors

- 4, 5, 8, 12 poles versions
- Male and female
- Screw terminals (4,5,8 poles)
- Solder terminal (12 poles)
- Straight and right angle
- PG7, PG9/PG11 and **New version with from 4mm to 9mm cable exit.**
- Single and dual cable entry

M8/M9/M12/M23 CIRCULAR CONNECTORS

with hexagonal stainless-steel nut



M8/M9/M12/M23 CIRCULAR CONNECTORS



NEW!



NEW!



**Also available with stainless steel nut*

M8/M9/M12/M23 CIRCULAR CONNECTORS

M12 field attachable transparent connectors

- 4 and 5 poles
- Male and female
- Screw terminals
- Straight and right angled
- Also available 2 kinds of circuits
with 1 LED and with bi-colour LED



**Also available with stainless steel nut*

M8/M9/M12/M23 CIRCULAR CONNECTORS

M12 field attachable connectors with metal housing

- 4, 5, 8, 12 poles
- Male and female
- Housing in nickel plated brass
- For tough environments
- Rated IP 67
- Completely shielded
- A, B, D Coded



**Also available with stainless steel nut*

M8/M9/M12/M23 CIRCULAR CONNECTORS

M12 panel mounting connectors

- 4, 5, 8, 12 poles
- Male and female
- Front and back mounting
- Solder and PCB connections and pre-wired

M8/M9/M12/M23 CIRCULAR CONNECTORS

M12 panel mounting connectors



male



*M12 panel back mounting connectors
With screw contacts*



female



**Also available with stainless steel nut*

M8/M9/M12/M23 CIRCULAR CONNECTORS

M12 panel mounting connectors

Male

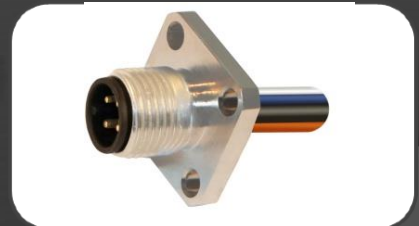
Female



Back Mounting



Front Mounting



Adapter Male/Female

With flange

NEW!



Plastic Housing

NEW!



17 poles

**Also available with stainless steel nut*

M8/M9/M12/M23 CIRCULAR CONNECTORS

M12 connectors with PVC or PUR moulded cable

- 4,5,8 and 12 poles
- Male and female
- Straight and right angled
- PVC and PUR cable
- Any length available

Straight



90°



**Also available with stainless steel nut*

M8/M9/M12/M23 CIRCULAR CONNECTORS

M12 totally shielded connectors with shielded cable

- 3, 4, 5, 8, 12 poles
- Male and female
- Straight and right angled
- Shield connected to the nut and/or to the 5th / 8th pin
- Single and double ended
- PVC and PUR shielded cables

Straight



90°



**Also available with stainless steel nut*

M8/M9/M12/M23 CIRCULAR CONNECTORS

M12 moulded connectors with Led

- 3, 4, 5 poles
- Male and female
- Straight and right angled
- Single and double ended
- PVC and PUR cable (other cable available on request)
- Any length available
- 2 and 3 LED's for PNP and NPN switch indication



**Also available with stainless steel nut*

M8/M9/M12/M23 CIRCULAR CONNECTORS

M12 T and Y splitters

- *“T” and “Y” splitters are designed to expand the ports on hard wired distribution boxes, by splitting the two individual wires into two connectors*
- *Also fully shielded available*
- ***NEW – Transparent “Y” with light indication***



M8/M9/M12/M23 CIRCULAR CONNECTORS

M12 T and Y-splitter connector



NEW!

M12 T connectors,
360° totally shielded



NEW!



NEW!



NEW!

**Also available with stainless steel nut*

M8/M9/M12/M23 CIRCULAR CONNECTORS

M12 Moulded Y Splitters

- 3, 4, 5, 8 and 12 poles
- Male and female
- 2 and 3 way
- Straight and angled



**Also available with stainless steel nut*

M8/M9/M12/M23 CIRCULAR CONNECTORS

Extensions cables

- *M8/M12 to M8/M12*
- *3, 4, 5, 8, 12 poles*
- *Male and female*
- *PVC, PUR and Shielded cable (other cable available on request)*
- *Any length available*
- *Fully shielded version available*



**Also available with stainless steel nut*

M8/M9/M12/M23 CIRCULAR CONNECTORS

M12 field attachable connectors

B-coded (PROFIBUS)

- 4 and 5 poles
- Male and female
- With plastic and metal housing
- Straight and right angled with plastic
- M12 Panel Mounting



**Also available with stainless steel nut*

M8/M9/M12/M23 CIRCULAR CONNECTORS

M12 B-coded terminal connectors (PROFIBUS)

- 5 poles
- Male and female
- With terminal connectors and totally shielded



Totally shielded



Terminal connectors



**Also available with stainless steel nut*

M8/M9/M12/M23 CIRCULAR CONNECTORS

M12 T and Y-splitter connector (PROFIBUS)



**Also available with stainless steel nut*

M8/M9/M12/M23 CIRCULAR CONNECTORS

M12 field attachable connectors

D-coded

- 5 poles
- Male and female
- Straight with plastic and metal housing
- Angled with plastic and metal housing



**Also available with stainless steel nut*

M8-M12 CIRCULAR CONNECTORS

FIELD ATTACHABLE



ATEX 94/9/CE approved



NEW!



NEW!



NEW!

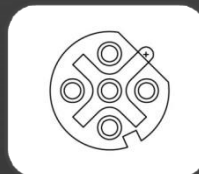


M8/M9/M12/M23 CIRCULAR CONNECTORS

M12 panel mounting connectors

D-coded

- 4 poles
- female
- Back panel Mounting
- PG9 with DOUBLE CUT



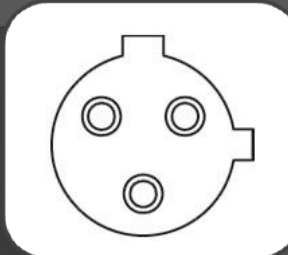
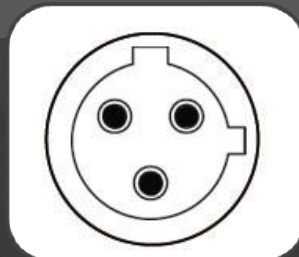
**Also available with stainless steel nut*

M8/M9/M12/M23 CIRCULAR CONNECTORS

M12 field attachable connectors

C-coded

- 3 poles
- Male and female
- Straight with plastic and metal housing
- Angled with plastic and metal housing
- M12 Panel Mounting



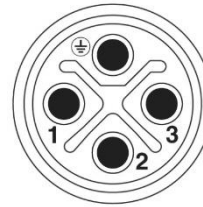
**Also available with stainless steel nut*

M8/M9/M12/M23 CIRCULAR CONNECTORS

M12 field attachable connectors

S-coded

- 4 poles
- Male and female
- Straight with plastic and metal housing
- Angled with plastic and metal housing
- M12 Panel Mounting
- **RATED VOLTAGE: 630V AC/DC**
- **RATED CURRENT: 12A**



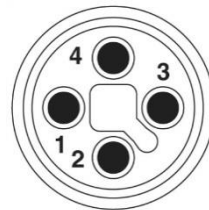
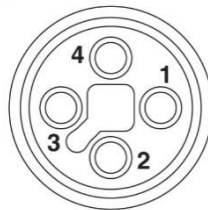
**Also available with stainless steel nut*

M8/M9/M12/M23 CIRCULAR CONNECTORS

M12 field attachable connectors

T-coded

- 4 poles
- Male and female
- Straight with plastic and metal housing
- Angled with plastic and metal housing
- M12 Panel Mounting
- **RATED VOLTAGE:** 63V AC/DC
- **RATED CURRENT:** 12A



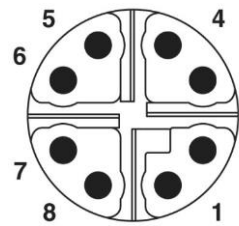
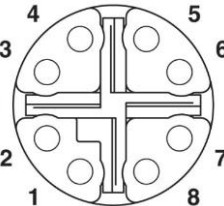
**Also available with stainless steel nut*

M8/M9/M12/M23 CIRCULAR CONNECTORS

M12 field attachable connectors

X-coded

- 8 poles
- Male and female
- Straight with plastic and metal housing
- Angled with plastic and metal housing
- M12 Panel Mounting
- RATED VOLTAGE: 48V AC/DC
- RATED CURRENT: 0,5A



**Also available with stainless steel nut*

M8/M9/M12/M23 CIRCULAR CONNECTORS

M23 Panel Mounting and Moulded Cable

- 12, 17 and 19 poles
- Male and female
- Female straight /90° with moulded cable
- Male Panel Mounting
- Conductor size: 0,22 mm²
- Rated voltage: 400V
- Rated current: 6A Max

Male



Panel Mounting

Female



moulded cable

EN 175301-803 CONNECTORS (ex DIN 43650) Form A, B, C

- *DIN 43650 is the standard for a series of electrical connectors, which are commonly used with solenoid valves (especially those used on valves in hydraulics and pneumatics)*
- *Other applications include the connection special sensors, such as pressure switches, filter switches, optical, proximity and limit switches.*

EN 175301-803 CONNECTORS (ex DIN 43650)

EN175301-803-A/ISO 4400 (ex DIN43650 /A) square connectors
G1 series = 18mm contacts spacing
Field attachable

- 2 and 3 poles + earth
- Without electronic components
- With electronic components:
- Circuits available include
 - LED Only
 - Varistor & LED
 - Diode & LED
 - Half and Full bridge rectifier
- For 12, 24, 115 & 230 volt applications



Energy saving connectors

Connettori a risparmio energetico

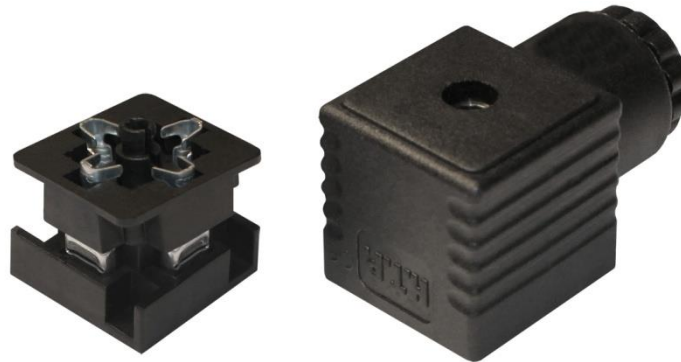
- *Reduction of energy consumption by 60%*
- *Reduction of working temperature of valve / electrovalve*
- *Extention of life of valve*



EN 175301-803 CONNECTORS (ex DIN 43650)

EN175301-803-A/ISO 4400 (ex DIN43650 /A) square connectors
G1F series = 18mm contacts spacing
Field attachable

- 3 poles + earth
- Earth position: H12
- Without electronic components
- Voltage: 1-250 AC/DC

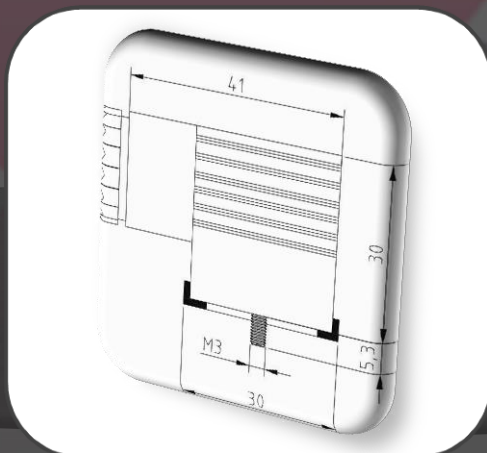


EN 175301-803 CONNECTORS (ex DIN 43650)

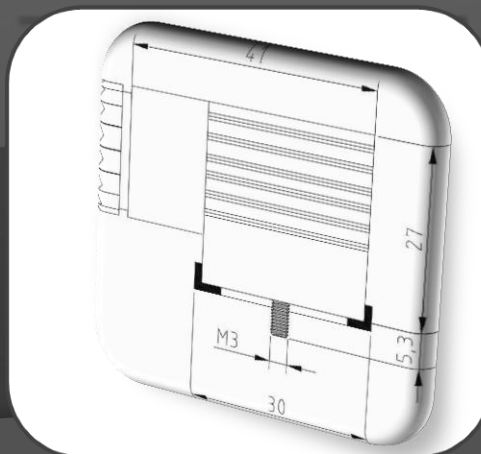
AVAILABLE IN 4 DIFFERENT DIMENSIONS

- G1 series (height 30mm)
- G2 series (height 27mm)
- G3 series (height 25mm)
- G4 series (height 47mm)

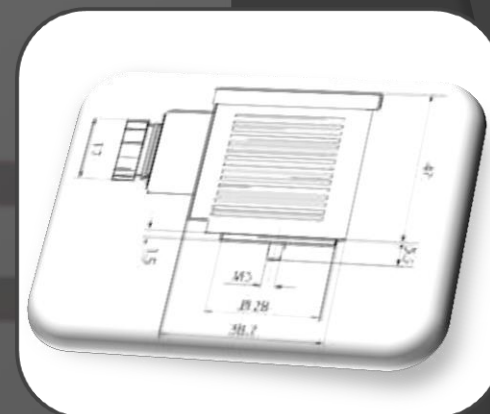
G1



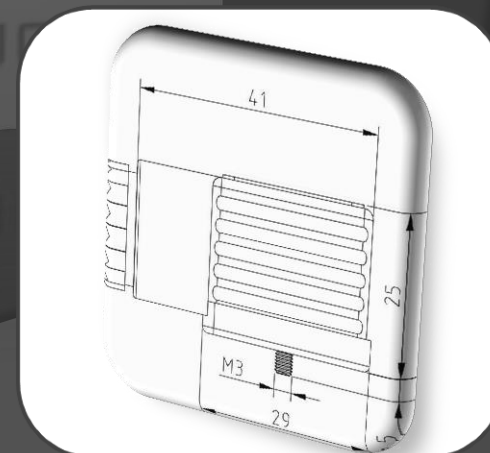
G2



G4



G3



EN 175301-803 CONNECTORS (ex DIN 43650)

EN 175301-803-A/ISO 4400 (ex DIN43650 /A) square connectors
CG1 series = 18mm contacts spacing
Moulded cable version

- 2 poles + 2 earths
- 3 poles + earth
- With 90° and 180° cable exit
- PVC and PUR cable
- Without electronic components
- With electronic components:
 - Circuits available include
 - LED Only
 - Varistor & LED
 - Diode & LED
 - Half and Full bridge rectifier
- For 12, 24, 115 & 230 volt applications



EN 175301-803 CONNECTORS (ex DIN 43650)

**EN 175301-803-A/ISO 4400 (ex DIN43650 /A) square connectors
CG4 series = 18mm contacts spacing and 21mm Housing Height
Moulded cable version**

- 2 poles + earths
- 3 poles + earth
- With 90° cable exit
- PVC and PUR cable
- Without electronic components
- With electronic components:
 - Circuits available include
 - LED Only
 - Varistor & LED
 - Diode & LED
 - Half and Full bridge rectifier
- For 12, 24, 115 & 230 volt applications
- With Integrated gasket or Profiled Gasket



EN 175301-803 CONNECTORS (ex DIN 43650)

**EN 175301-803-A/ISO 4400 (ex DIN43650 /A) Circular connectors
CGR series = 18mm contacts spacing and 21mm Housing Height
Moulded cable version**

- 3 poles + earth
- With 90° cable exit
- PVC and PUR cable
- Without electronic components
- With electronic components:
 - Circuits available include
 - LED Only
 - Varistor & LED
 - Diode & LED
 - Half and Full bridge rectifier
- For 12, 24, 115 & 230 volt applications
- Without profilate gasket

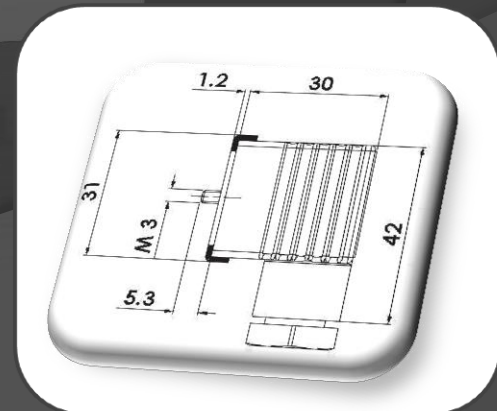
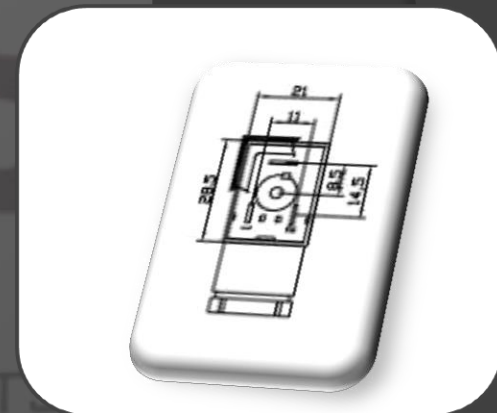


EN 175301-803 CONNECTORS (ex DIN 43650)

EN 175301-803-B/ISO 6952 (ex DIN43650 /B) square connectors

**M1 series = 11mm contacts spacing
Field attachable**

- Without electronic components
- With electronic components:
- Circuits available include
 - LED Only
 - Varistor & LED
 - Diode & LED
 - Half and Full bridge rectifier
- For 12, 24, 115 & 230 volt applications



EN 175301-803 CONNECTORS (ex DIN 43650)

EN175301-803-B/ISO 6952 (ex DIN43650 /B) rectangular connectors
CM1 series = 11mm contacts spacing
With moulded cable

- 2 poles + earth 6h, 12h or 2 poles + double earth 6/12h (New version available)
- With 90° and 180° cable exit
- PVC and PUR cable
- Available in any length
- Without electronic components
- With electronic components:
 - Circuits available include
 - LED Only
 - Varistor & LED
 - Diode & LED
 - Half and Full bridge rectifier
- For 12, 24, 115 & 230 volt applications



EN 175301-803 CONNECTORS (ex DIN 43650)

EN 175301-803-B/ISO 6952 (ex DIN43650 /B) square connectors
M2 series = 10mm contacts spacing
Field attachable

- Without electronic components
- With electronic components:
- Circuits available include
 - LED Only
 - Varistor & LED
 - Diode & LED
 - Half and Full bridge rectifier
- For 12, 24, 115 & 230 volt applications



EN 175301-803 CONNECTORS (ex DIN 43650)

EN175301-803-B/ISO 6952 (ex DIN43650 /B) rectangular connectors
CM2 series = 10mm contacts spacing With moulded cable

- 2 poles + earth 6h, 12h
- With 90° and 180° cable exit
- PVC and PUR cable
- Available in any length
- Without electronic components
- With electronic components:
 - Circuits available include
 - LED Only
 - Varistor & LED
 - Diode & LED
 - Half and Full bridge rectifier
- For 12, 24, 115 & 230 volt applications



EN 175301-803 CONNECTORS (ex DIN 43650)

MICRO-EN 175301-803 C (exDIN 43650 – C) square connectors
P1 series = 8mm contacts spacing

- Without electronic components
- With electronic components:
- Circuits available include
 - LED Only
 - Varistor & LED
 - Diode & LED
 - Half and Full bridge rectifier
- For 12, 24, 115 & 230 volt applications



EN 175301-803 CONNECTORS (ex DIN 43650)

MICRO-EN 175301-803 C (exDIN 43650 – C) square connectors
CP1 series = 8mm contacts spacing

- 2 poles + earth
- With 90° and 180° cable exit
- PVC and PUR cable
- Available in any length
- Without electronic components
- With electronic components:
 - Circuits available include
 - LED Only
 - Varistor & LED
 - Diode & LED
 - Half and Full bridge rectifier
- For 12, 24, 115 & 230 volt applications



EN 175301-803 CONNECTORS (ex DIN 43650)

MICRO-EN 175301-803 C (exDIN 43650 – C) square connectors
P2 series = 9,4mm contacts spacing

- *Without electronic components*
- *With electronic components:*
- *Circuits available include*
 - LED Only
 - Varistor & LED
 - Diode & LED
 - Half and Full bridge rectifier
- *For 12, 24, 115 & 230 volt applications*



EN 175301-803 CONNECTORS (ex DIN 43650)

MICRO-EN 175301-803 C (exDIN 43650 – C) square connectors
CP2 series = 9,4mm contacts spacing

- 2 poles + earth
- With 90° and 180° cable exit
- PVC and PUR cable
- Available in any length
- Without electronic components
- With electronic components:
 - Circuits available include
 - LED Only
 - Varistor & LED
 - Diode & LED
 - Half and Full bridge rectifier
- For 12, 24, 115 & 230 volt applications



EN 175301-803 CONNECTORS (ex DIN 43650)

Adapters DIN 43650 to M12 male

- *Without electronic components*
- *With electronic components:*
 - *Circuits available include*
 - *Without components*
 - *LED Only*
 - *Varistor & LED*
 - *Diode & LED*
- *For 24, 115 & 230 volt applications*
- *Available in form A, B and C.*
- *Protection class: IP 67*



EN 175301-803 CONNECTORS (ex DIN 43650)

Adapters DIN 43650 to M12 180° exit

- *Without electronic components*
- *With electronic components:*
 - *Circuits available include*
 - *Without components*
 - *LED Only*
 - *Varistor & LED*
 - *Diode & LED*
- *For 24, 115 & 230 volt applications*
- *Available in form A.*
- *Protection class: IP 67*



**Adapters are available with other electronic components.*

**We produce special adapters in conformity with customers' needs.*

EN 175301-803 CONNECTORS (ex DIN 43650)

Adapters DIN 43650 to M12 Female

- *Without electronic components*
- *With electronic components:*
- *Circuits available include*
 - *Without components*
 - *LED Only*
 - *Varistor & LED*
 - *Diode & LED*
- *For 24, 115 & 230 volt applications*
- *Available in form A, B and C.*
- *Protection class: IP 67*



EN 175301-803 CONNECTORS (ex DIN 43650)

Adapters DIN 43650 A/B/C with electronic components



EN 175301-803 CONNECTORS (ex DIN 43650)

ATEX 94/9/CE approved DIN 43650 connectors



EN 175301-803 CONNECTORS (ex DIN 43650)

UL/CSA approved DIN 43650 bases connectors



EN 175301-803 CONNECTORS (ex DIN 43650)

UL/CSA approved DIN 43650 bases connectors



EN 175301-803 CONNECTORS (ex DIN 43650)

M8 /M12 – DIN 43650 Extension cables

- *PVC and PUR cable*
- *Without electronic components*
- *With electronic components:*
- *Circuits available include*
 - *Without components*
 - *LED Only*
 - *Varistor & LED*
 - *Diode & LED*
- *For 24, 115 & 230 volt applications*

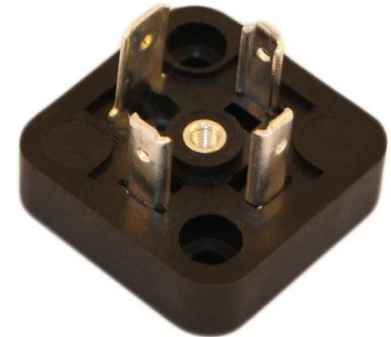


EN 175301-803 CONNECTORS (ex DIN 43650)

BASES

Bases for DIN 43650/A 28,4 x 28,4 mm

- *Male DIN43650/A connectors*
18 mm contact spacing
- *2 and 3 poles + earth*
- *For panel and special mounting*

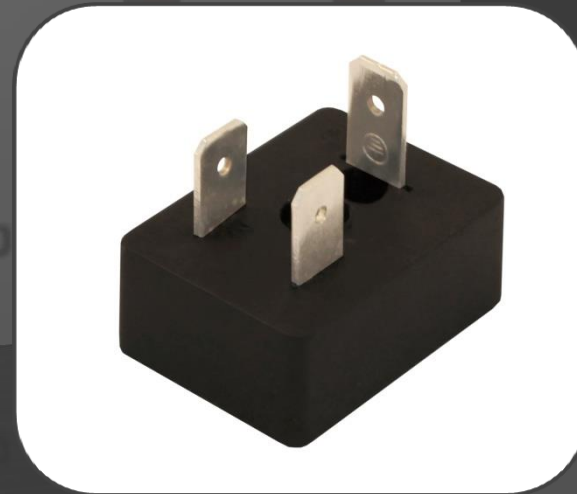


EN 175301-803 CONNECTORS (ex DIN 43650)

BASES

Rectangular bases for DIN 43650/B 25 x 33 mm

- *Male DIN43650/B connectors 11 mm contact spacing*
- *2 poles + earth*
- *For panel and special mounting*



EN 175301-803 CONNECTORS (ex DIN 43650)

BASES

Square bases for DIN 43650/C 17 x 17 mm

- *Male DIN43650/C connectors 8 mm and 9,4 mm contact spacing*
- *2 and 3 poles + earth*
- *For panel and special mounting*

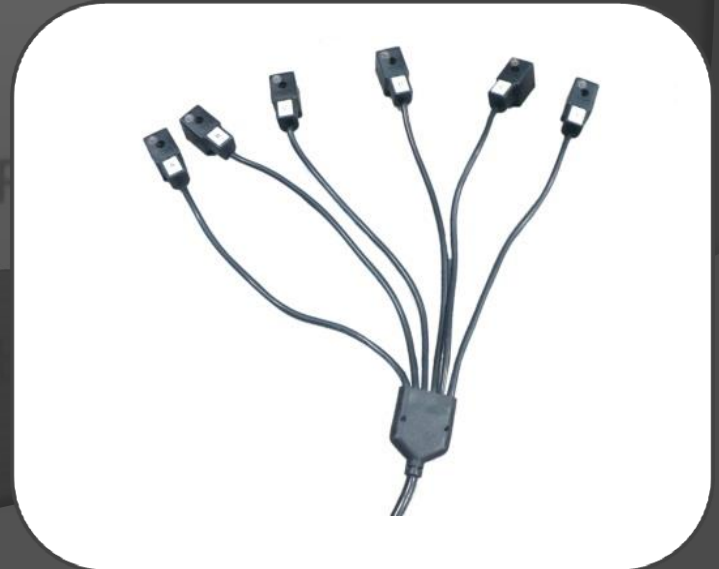


MULTI-HEAD SPLITTERS

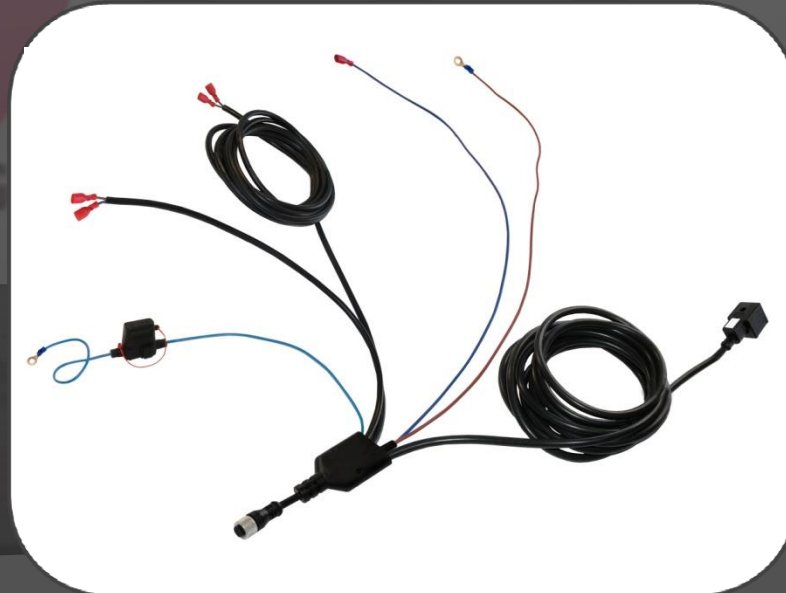
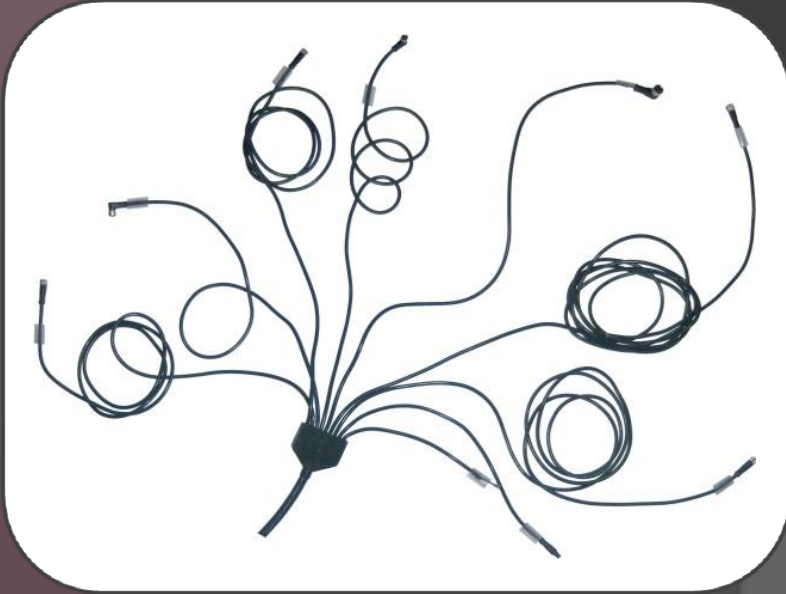
- *Used to multiply outputs*
- *Available in all DIN43650 connector and M8/M12*
- *PVC and PUR cable*
- *Without electronic components*
- *With electronic components:*
 - *Circuits available include*
 - *Without components*
 - *LED Only*
 - *Varistor & LED*
 - *Diode & LED*
- *For 24, 115 & 230 volt applications*



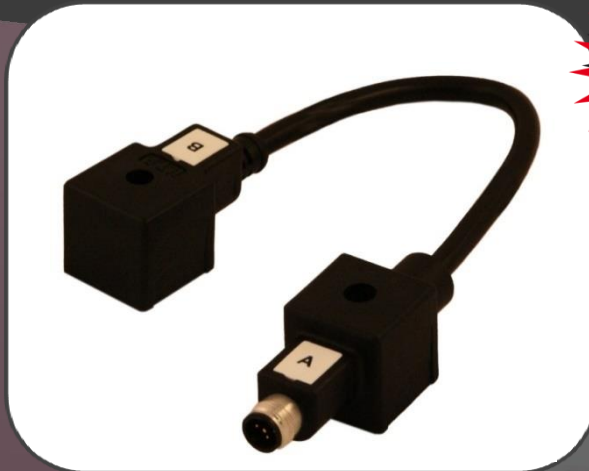
MULTI-HEAD SPLITTERS



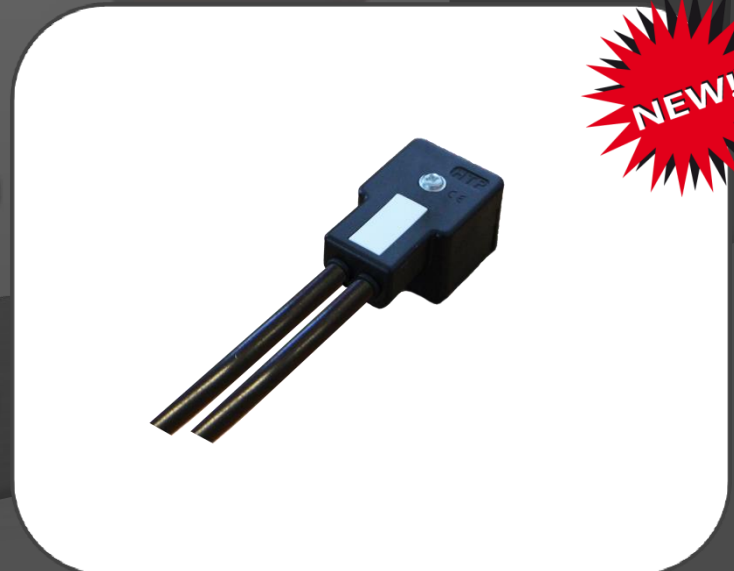
MULTI-HEAD SPLITTERS



MULTI-HEAD DIN IN LINE

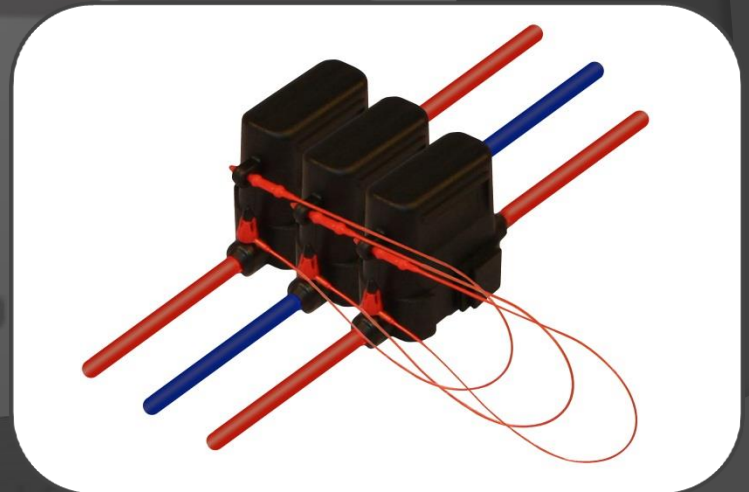


MULTI-HEAD DIN CHAIN



FUSE HOLDER

- *Fuse holder can be supplied with different cable sections*
- *Any length available*
- *Protection class: IP 68*
- *Can be assembly in series as a modular system*



METRIPAK MOULDED CONNECTORS

- 3 poles
- Male and female
- Protection class: IP 68



Automotive moulded Connectors

interchangeable with Deutsch Connectors

- 2 poles
- Male and female

Female



NEW!

Male



NEW!

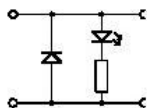
Automotive moulded Connectors

interchangeable with Deutsch Connectors

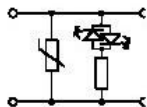
DEUTSCH DT06-2S

2-POLE/ 2 POLI/LED

Deutsch DT 06-2S
2-pole/2 poli /LED



YD: LED+Diode 24 VDC



YV: LED+Varistor 24 VAC/DC



NEW!

Automotive moulded Connectors

interchangeable with Deutsch Connectors

DEUTSCH DT 3-POLE/3 POLI

Deutsch DT
3-pole/3 poli



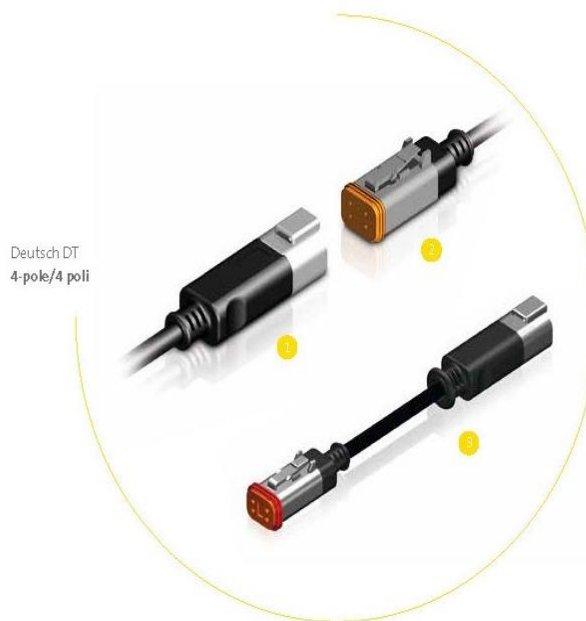
NEW!

Automotive moulded Connectors

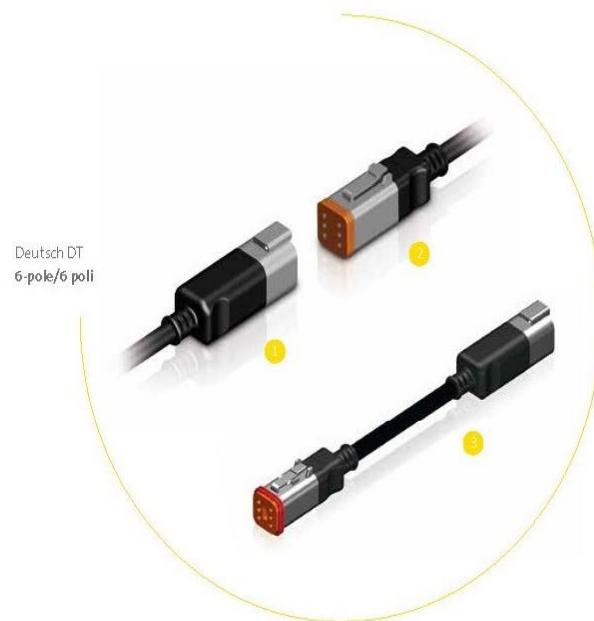
interchangeable with Deutsch Connectors

NEW!

DEUTSCH DT
4-POLE/4 POLI



DEUTSCH DT
6-POLE/6 POLI



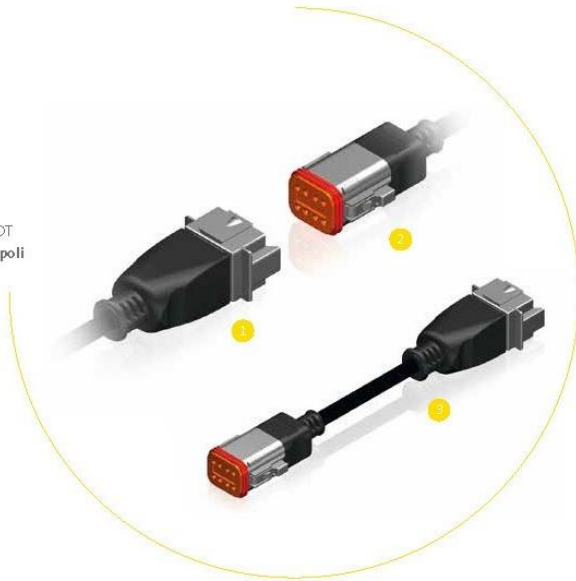
Automotive moulded Connectors

interchangeable with Deutsch Connectors

NEW!

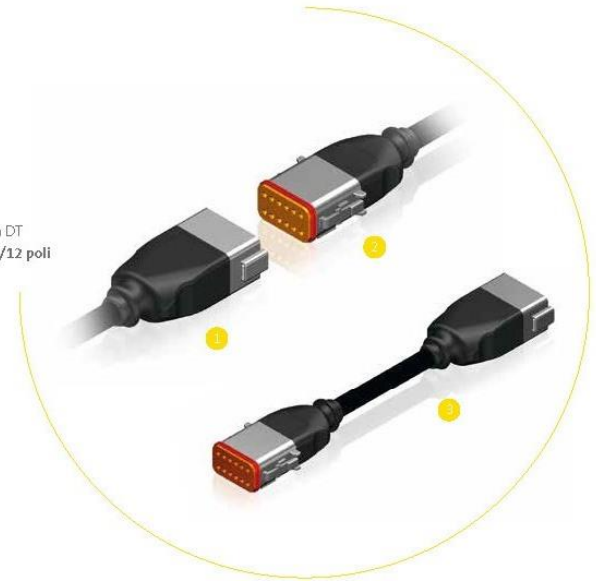
DEUTSCH DT 8-POLE/8 POLI

Deutsch DT
8-pole/8 poli



DEUTSCH DT 12-POLE/12 POLI

Deutsch DT
12-pole/12 poli



Automotive moulded Connectors

interchangeable with Deutsch Connectors

NEW!

TYCO SUPERSEAL

2-POLE/2 POLI

Tyco Superseal
2-pole/ 2 poli



TYCO SUPERSEAL

3-POLE/3 POLI

Tyco Superseal
3-pole/3 poli



Automotive moulded Connectors

interchangeable with Deutsch Connectors

NEW!

TYCO SUPERSEAL

4-POLE/4 POLI

Tyco Superseal
4-pole/4 poli



TYCO SUPERSEAL

5-POLE/5 POLI

Tyco Superseal
5-pole/5 poli



Automotive moulded Connectors

interchangeable with Deutsch Connectors

TYCO SUPERSEAL

6-POLE/6 POLI

Tyco Superseal
6-pole/6 poli



NEW!

Automotive moulded Connectors

interchangeable with Deutsch Connectors

NEW!

DELPHI METRI-PACK 6-POLE/6 POLI

Delphi Metri-Pack
6-pole/6 poli



Delphi Metri-Pack
6-pole/6 poli/90°



DELPHI METRI-PACK 10-POLE/10 POLI

Delphi Metri-Pack
10-pole/10 poli



Automotive moulded Connectors

interchangeable with Deutsch Connectors

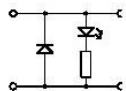


TYCO JUNIOR POWER TIMER

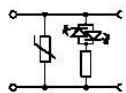
LED AND SUPPRESSION/

LED E SOPPRESSIONE DI SOVRATENSIONI

Tyco Junior Power Timer
Power and control cable/
Cavo di alimentazione e controllo



YD: LED+Diode 24 VDC



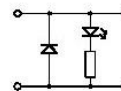
YV: LED+Varistor 24 VAC/DC

TYCO JUNIOR POWER TIMER

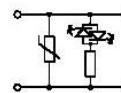
LED AND SUPPRESSION/

LED E SOPPRESSIONE DI SOVRATENSIONI

Tyco Junior Power Timer
Single conductors/
Conduttori singoli

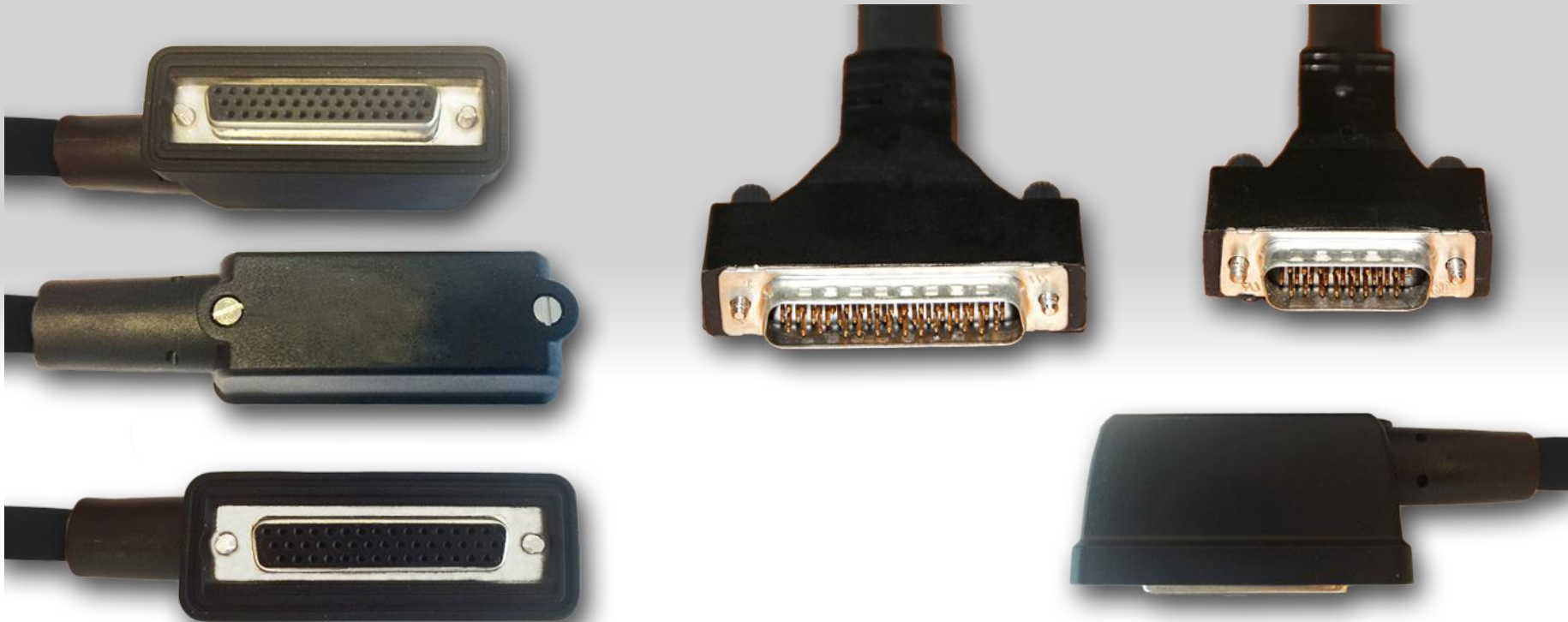


YD: LED+Diode 24 VDC



YV: LED+Varistor 24 VAC/DC

D-sub straight/angled With moulded cable



25poles/44poles

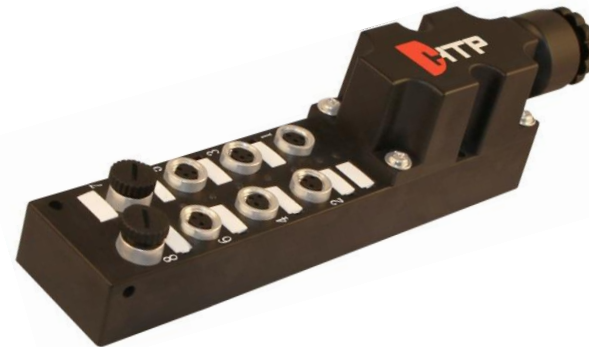
DISTRIBUTION BOXES

- *Distribution Boxes eliminate the need to run multiple cables back to the control panel and create a “plug and play” system*
- *They can be used for both input & output devices*
- *Commons within the box reduces wiring time at the control panel*
- *Distribution Boxes are designed around the standard wiring used for the connector, position is provided for positive, negative and ground positions. Each connector has 2 individual wires available to transfer NO & NC position status for input devices or one wire can be used to provide separate power for output devices*

DISTRIBUTION BOXES

M8 distribution box with terminal contacts

- 6 – 8 – 10 position
- Terminal contacts
- 3 and 4 poles
- With and without LED indication for PNP and NPN sensors



DISTRIBUTION BOXES

M8 distribution box with moulded cable

- 6 – 8 – 10 – 12 position
- PUR and PVC cable
- Any length available
- With and without LED indication for PNP and NPN sensors



DISTRIBUTION BOXES

M8 distribution boxes with M12 connection

- 4-6-10-12 position
- with M12 8 poles connection & with M12 12 poles connection
- 3 and 4 poles
- With and without LED indication for PNP and NPN sensors



DISTRIBUTION BOXES

M12 distribution boxes with terminal contacts

- *Single and double signal*
- *4, 6 and 8 ports*
- *With and without LED indication for PNP and NPN sensors*



DISTRIBUTION BOXES

M12 distribution boxes with moulded cable

- *Single and double signal*
- *4, 6 and 8 ports*
- *Any length available*
- *PVC and PUR cable*
- *With and without LED indication for PNP and NPN sensors*



DISTRIBUTION BOXES

M12 distribution boxes with M23 connection

- 8 position
- with M23 19 poles connection
- 4 and 5 poles



DISTRIBUTION BOXES

M12 distribution boxes with 7/8" Connectors



7/8" CONNECTORS

7/8" Field attachable connectors

- 3, 4, 5, 6 poles
- Male and female



7/8" CONNECTORS

7/8" panel mounting connectors

- 3, 4, 5, 6 poles
- Male and female
- Front and back mounting
- With soldered wires or PCB contacts



7/8" CONNECTORS

7/8" connectors with moulded cable

- 3, 4, 5, 6 poles
- Male and female
- Straight and angled
- PVC and PUR cable
- Any length available



With male contacts, male internal core and female nut



7/8" CONNECTORS

7/8" T-Splitter connectors

- 3, 4, 5 poles
- Male and female
- Also with M12 connector

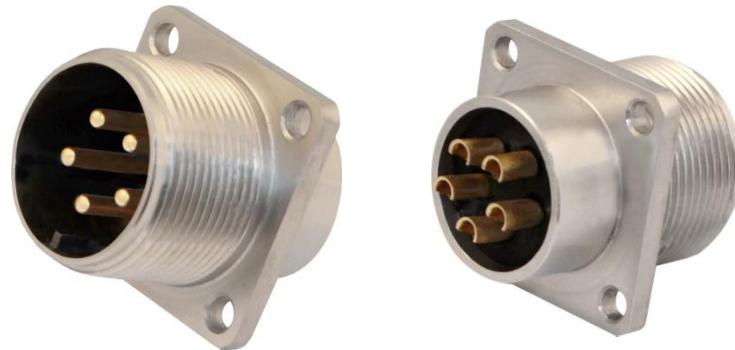


MIL-C5015 STYLE CONNECTORS

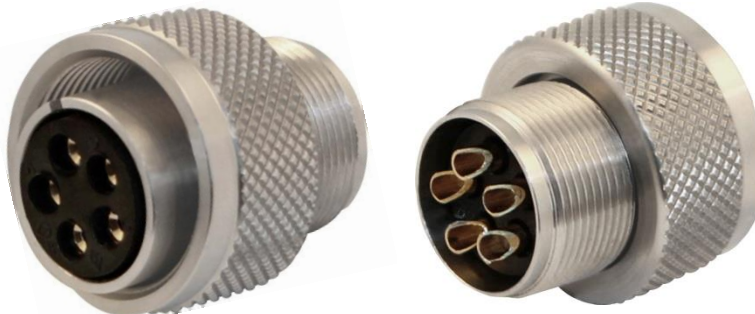
MIL-C5015 STYLE CONNECTORS IN STAINLESS STEEL (AISI 304)

- 5 poles
- Male and female
- Panel Mounting and Field Attachable
- Stainless steel (AISI 304)

Male – Panel Mounting

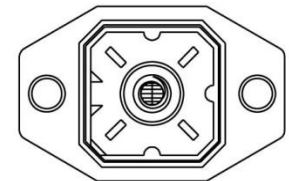
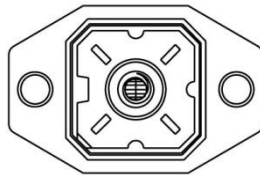


Female – Field Attachable



INDUSTRIAL CONNECTORS

- 15mm X 15mm with 4 diagonal pins
- Male and female contacts
- 3 poles + earth
- Standard: DIN VDE 0627 / IEC 61984
- Soldered contacts
- Bases also available with flange and protection cap



With 2 different Polarization Key

EN17500 CONNECTORS

- *The circular connector series C 015 is in conformity with the technical data referred to in EN 175000 normative*
- *Its specific features are solid construction and easy handling*
- *Futhermore, this series is interchangeable with connectors according to MIL-C-5015, shell size 14S*
- *Its main fields of application are proportional valves, measurement, test and control*
- *6 poles + earth*
- *Panel mounting (male) and field attachable (female)*



TIMER

Digital

- The HTP in-line timer is designed to cycle power on and off, to either pneumatic or hydraulic solenoid valves
- Typical applications include draining water from compressor tanks, periodic product sampling, and control of lubricating or irrigation systems
- Plugs in-line between male & female connectors
- Works with any voltage from 24 to 240 VAC/DC
- ON – 0.5 to 99 sec OFF – 0.5 to 99 min
- For pneumatic or hydraulic solenoid valves
- ON and OFF LED status indication
- Manual push button override



Industrial lighting *led*

- LONG LIFE
- ENERGY SAVING
- LOW HEAT EMISSION



Industrial lighting

NEW!

IP67

INDUSTRIAL LIGHTING
LED 6000K WITH 2 M12 PLUG FOR
CONNECTION IN SERIES



Plastic Cable ties

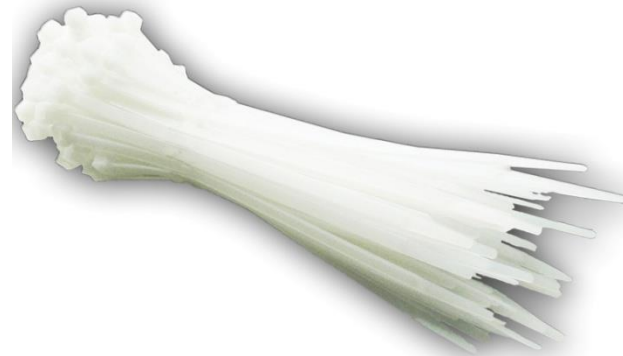
Available with plastic or metal tooth

NEW!

CABLE TIES PLASTIC TOOTH / FASCETTA CON DENTINO PLASTICO				
CODE CODICE	COLOUR COLORE	LENGHT LUNGHEZZA	WIDTH LARGHEZZA	PACKAGING PCS
HCTP-25X100-BK-100	BLACK NERA	100mm	2,5mm	100
HCTP-25X200-BK-100	BLACK NERA	200mm	2,5mm	100
HCTP-36X150-BK-100	BLACK NERA	150mm	3,6mm	100
HCTP-36X150-WH-100	WHITE BIANCA	150mm	3,6mm	100
HCTP-36X200-BK-100	BLACK NERA	200mm	3,6mm	100
HCTP-48X190-BK-100	BLACK NERA	190mm	4,8mm	100
HCTP-48X190-WH-100	WHITE BIANCA	190mm	4,8mm	100
HCTP-48X300-BK-100	BLACK NERA	300mm	4,8mm	100
HCTP-48X370-BK-100	BLACK NERA	370mm	4,8mm	100
HCTP-48X370-WH-100	WHITE BIANCA	370mm	4,8mm	100
HCTP-76X370-BK-100	BLACK NERA	370mm	7,6mm	100
HCTP-76X450-BK-100	BLACK NERA	450mm	7,6mm	100
HCTP-88X760-BK-100	BLACK NERA	760mm	8,8mm	100

NEW!

CABLE TIES METAL TOOTH / FASCETTA CON DENTINO METALLICO				
CODE CODICE	COLOUR COLORE	LENGHT LUNGHEZZA	WIDTH LARGHEZZA	PACKAGING PCS
HCTM-24X201-BK-100	BLACK NERA	201mm	2,4mm	100
HCTM-30X100-BK-100	BLACK NERA	100mm	3mm	100
HCTM-30X100-WH-1000	WHITE BIANCA	100mm	3mm	1000
HCTM-40X150-BK-100	BLACK NERA	150mm	4mm	100
HCTM-40X200-WH-1000	WHITE BIANCA	200mm	4mm	1000
HCTM-50X189-BK-100	BLACK NERA	189mm	5mm	100
HCTM-50X300-BK-100	BLACK NERA	300mm	5mm	100
HCTM-50X300-WH-1000	WHITE BIANCA	300mm	5mm	1000
HCTM-50X380-BK-100	BLACK NERA	380mm	5mm	100
HCTM-80X300-BK-100	BLACK NERA	300mm	8mm	100



FIXING CLIP FOR CONDUIT

- Designed to fix the conduit to M12, DIN43650 and 7/8" connectors
- Nylon PA66
- One clip for two different diameter conduit:
 - D1 \varnothing int.: 6.2mm; \varnothing est.: 10mm;
 - D2 \varnothing int.: 9,6mm; \varnothing est.: 13mm;



PRESS CABLE SCREW ADAPTORS

- *Accessory to FIXING Clip*
- *Available for PG7, PG9 and PG11 cable entry*
- *Compatible with all M12 field attachable, DIN 43650 to cable and 7/8" field attachable*

PG7



PG9

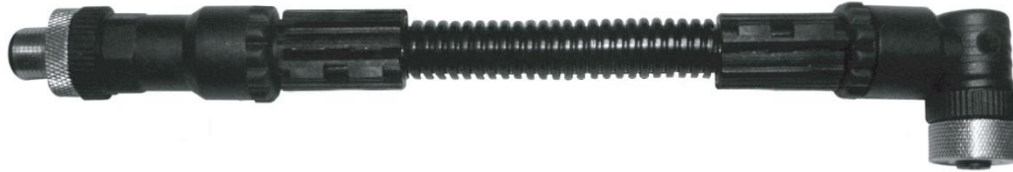


PG11



APPLICATIONS OF FIXING CLIP FOR CONDUIT

M12 Field attachable



7/8 Field attachable



M12 Field attachable DIN 43650/A Field attachable



APPLICATIONS OF FIXING CLIP FOR CONDUIT

Din 43650/A Field attachable/M12 moulded cable



DIN 43650 Field attachable



DIN 43650/A Moulded cable / M12 Moulded cable



MAGNETIC SENSORS





NORSTAT INC.

HTP™

HIGH TECH PRODUCTS S.R.L.



CERTIFICATO Nr 50 100 10684

Thank you for your attention!