



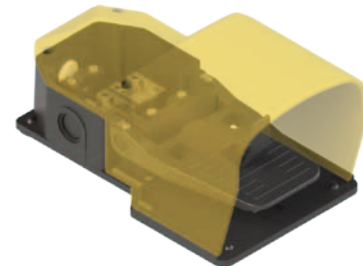
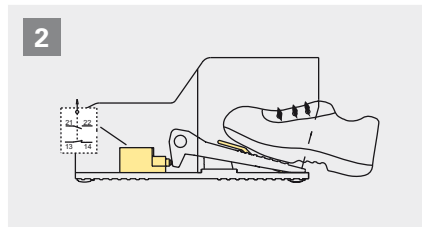
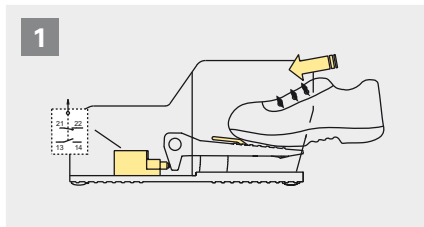
NORSTAT INC.

300 Roundhill Dr. Unit 4
Rockaway, NJ 07866
Tel: 973-586-2500
www.norstat.com

Special Offer on Over Stocked Foot Switches PX 20110



The PX foot switches are robust safety devices made of glass reinforced polymer shock proof thermoplastic resin with double insulation with an actuating force of 16N, IP53, ambient temperature -25°C-+80°C, with 20 million operation cycles life.



Only if the foot is completely inserted it is possible to lower the safety lever and push down the pedal actuator.

Main features

- Technopolymer, RED shock-proof housing
- Protection degree IP53
- 1NO & 1NC Snap Action Contact block
- Auxiliary Safety Lever
-

Special Limited Time Offer \$37.50 each